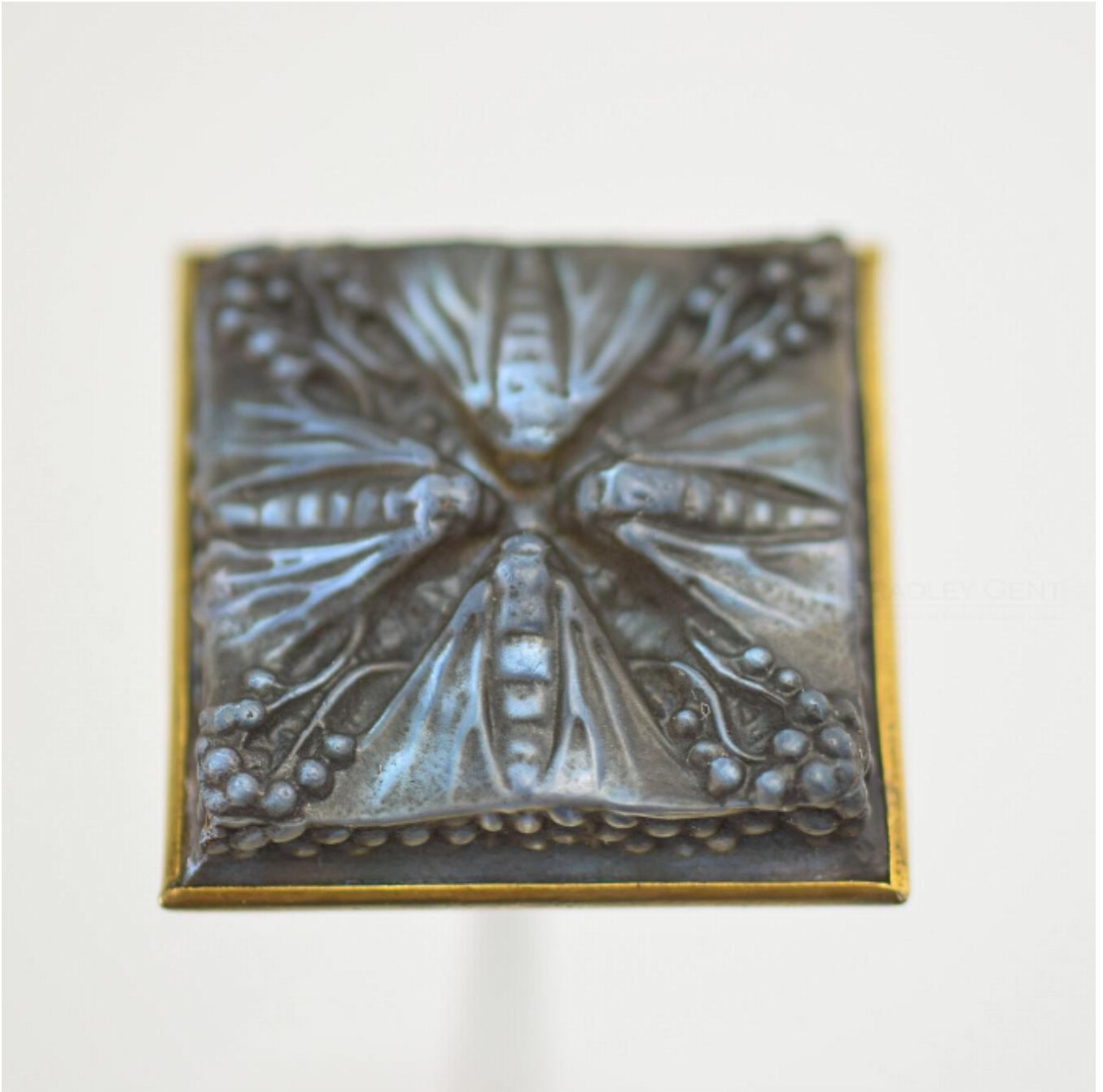


Rene Lalique Blue Quatre Papillons hatpin
Rene Lalique

£2,000



REF: 1441

Width: 4.5 cm (1.8")

Description

Rare quatre papillons hatpin

Introduced in 1912

Marcilhac page ref 565

Blue foil backed clear and frosted glass highlighted with black staining

The brass back is stamped Lalique along with the RL stamp

The condition is very good, with no damage.

The steel pin is tarnished and show signs of age as expected.

The overall length is 26cm